

## **MODULAR FLAT GATE TYPE MF - P**

**COMPONENT FOR SILO AND CONTAINER SYSTEMS  
WITH OPTIMAL SEALING – PNEUMATICALLY DRIVEN**



The **Modular Flat Gate Type MF-P** is used as the final component to seal silo and container systems. It guarantees optimal sealing when storing dusty or granulated bulk materials up to 8 mm of grit size.

### **Areas of Application**

- The modular construction of the gate allows the subsequent installation of various drive configurations (hand driven, pneumatic, electronic motor-driven actuation) using the identical base frame.
- The gate plate is led on two-sided rollers.
- The labyrinth-like installed shrink-wrap plates as well as a circulating threefold packing box gasket provide an optimal seal.
- If required, the packing box gasket can be adjusted easily from outside.

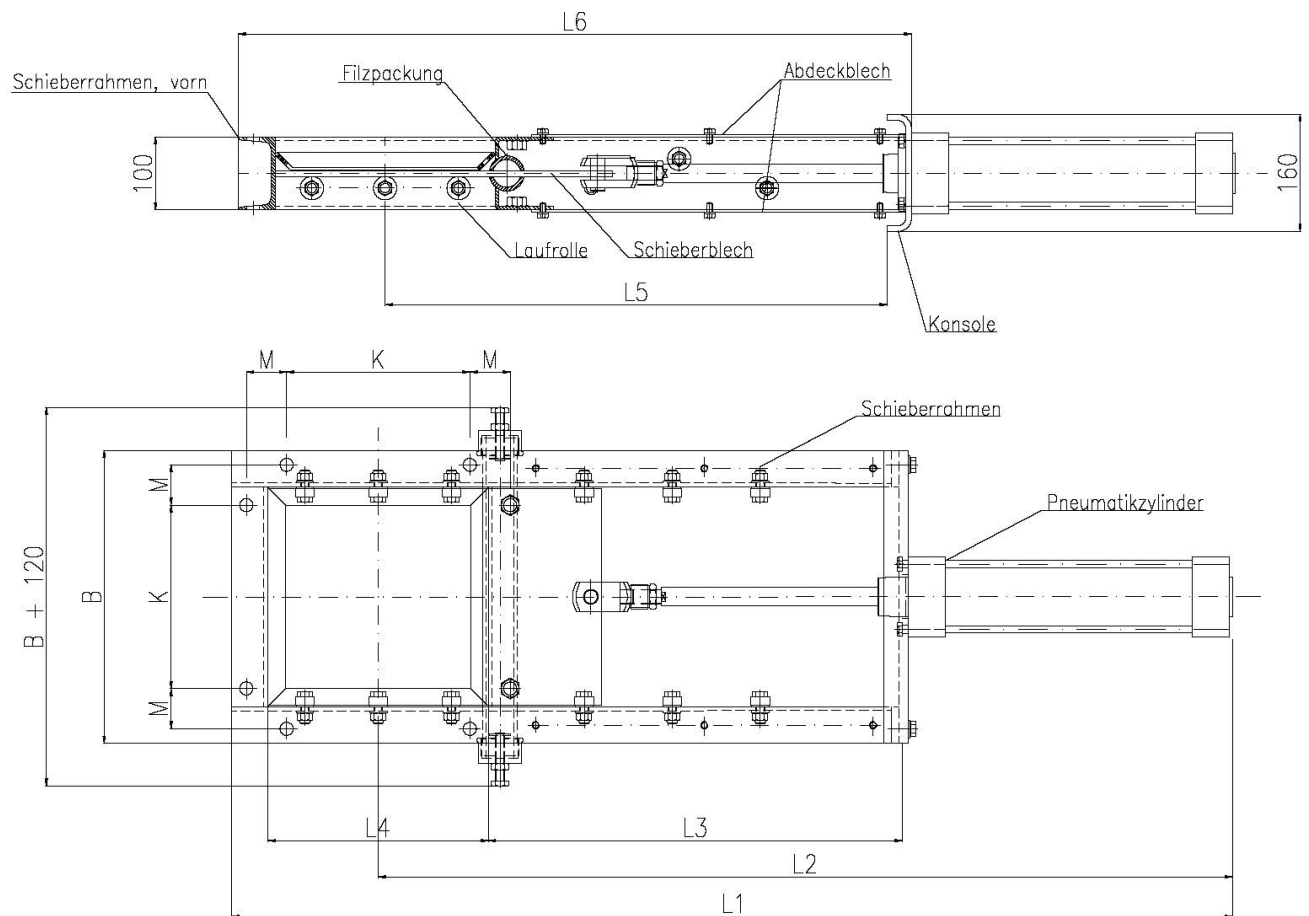
### **Details / Explanation**

- Gate frame: S235, coated
- Gate plate: S235, primed
- Gate plate sealing: Felt, oil impregnated

### **Finish**

**Dimensions Flat Gate Type MF - P**

Nominal Width	200 x 200	300 x 300	400 x 400
A	200	300	400
B	300	400	500
L1	1165	1365	1665
L2	965	1165	1465
L3	465	565	665
L4	200	300	400
L5	535	685	835
L6	718	918	1118
K	150	250	300
M	55	55	80



**Technical Data Flat Gate Type MF - P**

Nominal Width	200 x 200	300 x 300	400 x 400
Air consumption at 6 bar	0,089 NI/Hub	0,137 NI/Hub	0,184 NI/Hub
Weight	approx. 48 kg	approx. 55 kg	approx. 65 kg
Cylinder	Ø 100 mm		
Limit switch	Reed-Switch open/close		
Valve	5/2, NC		

**Article number**

Nominal Width	200 x 200	300 x 300	400 x 400
Article number	712 10 261	712 10 262	712 10 263